

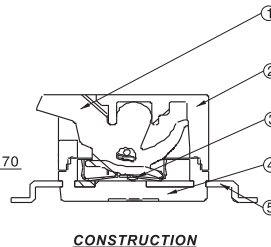
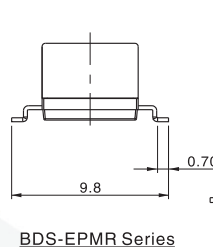
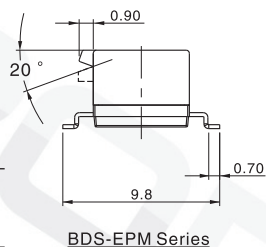
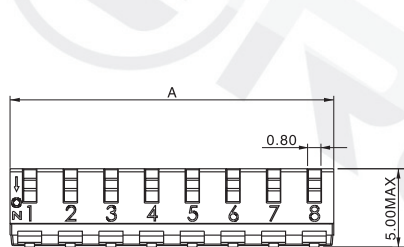
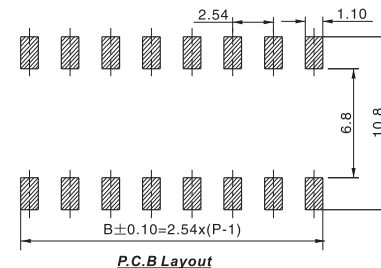
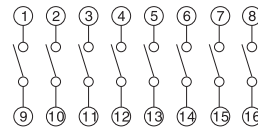
**BDS-EPM(R)-(XX) (F)-(RP)-V**

Actuator Type:  
 ( ): Raised Actuator  
 R: Recessed Actuator

Positions:  
 02,04,06  
 08,10

Package:  
 ( ): Tube  
 RP: Reel

F : Push Down OFF  
 ( ): Push Down ON



**主要技术参数、性能**  
**The Main Thchnology Performance**

额定电流、电压 Rate voltage current	DC 5V 1mA
接触电阻 Contact resistance	5mΩ Max
绝缘电阻 insulated resistance	50mΩ Min
耐受电压 Withstand Voltage	AC50V(50-60Hz) 1minute
电寿命 Electrical Life	200,000 Cycles (Min)
使用温度 Service temperature	-25°C+ 80 °C
使用湿度 Ambient humidity used	≤85%RH
耐焊温度 Withstand Soldering temperature	260°C ± 5°C 3S ± 1S

E				
D				
C				
B				
A				
项目 ITEM	名称 DESCRIPTION	材质 MATERIAL	数量 QYT	表面处理/颜色 FINSH/COLOR

						第一视角 FIRST VIEW	名称/NAME: 编码开关 ENCODER SWITCH SERIES		
							型号/MODEL: BDS-EPM(R)		
标记 SING	处数 FREQUENCY	更改文件号 REVISION	签名 APPROVED	日期 DATE	比列 SCALE	一般公差 GENERAL TOLERANCE			
设计 DESIGN		Zhaoming			单位 UNIT	mm	0.5~2	±0.10	
审核 CHECKED		Zengyong			重量 WELGHT		2~5	±0.15	
批准 APPROVED		Fuyunfeng					5~10	±0.20	
							角度 ANGLE	±0.5°	

